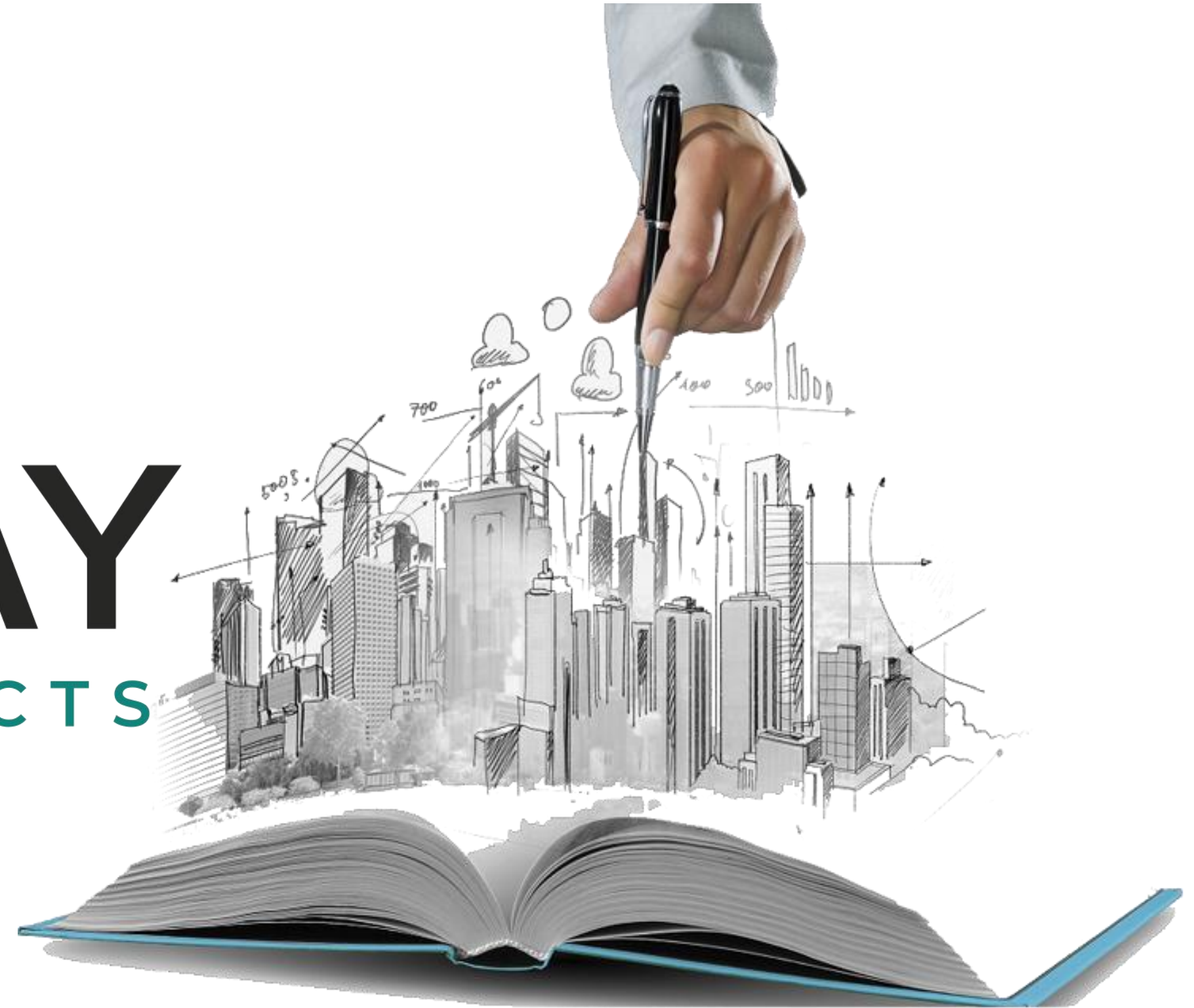


SRIVAY

INFRA PROJECTS



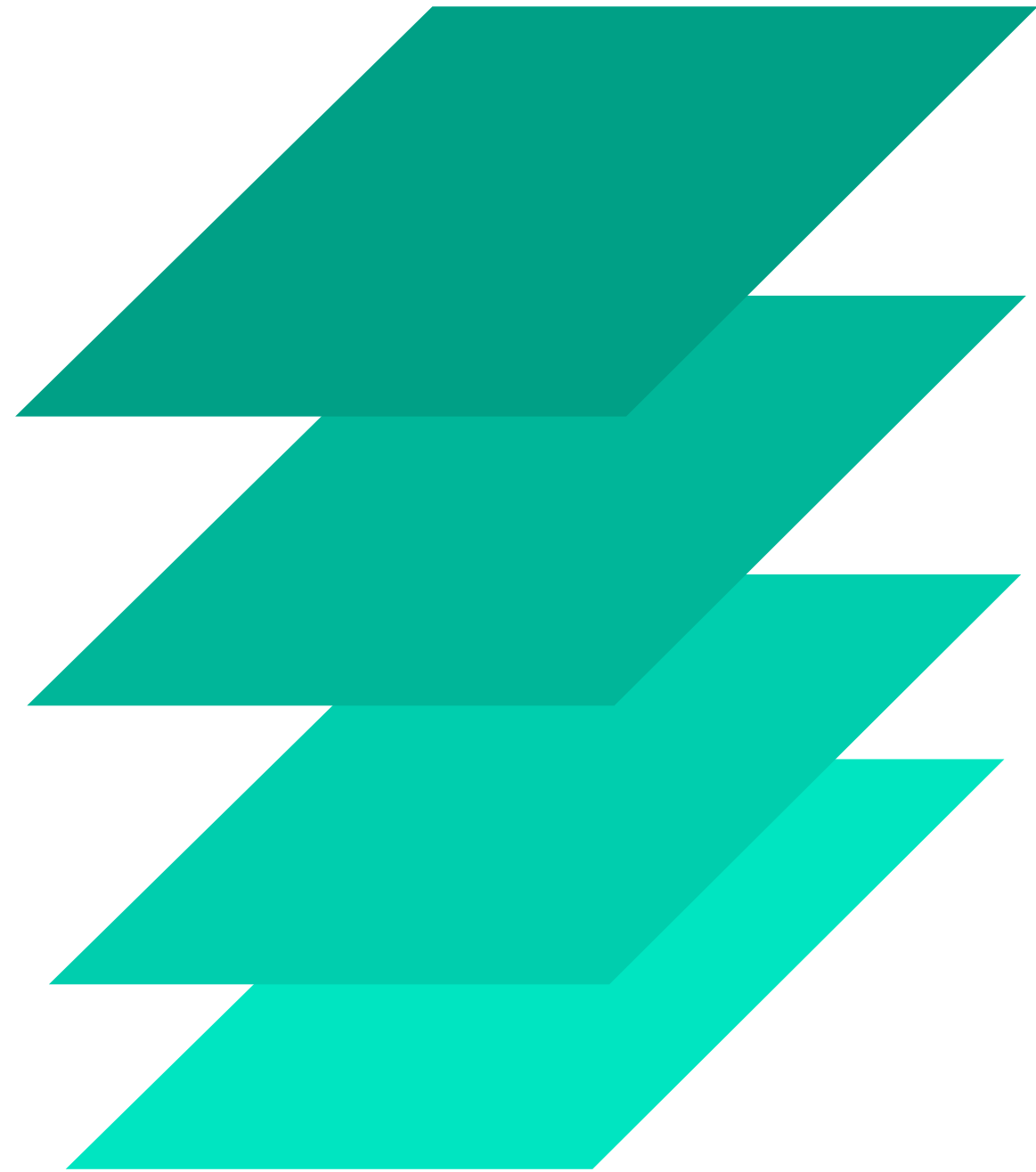
CONSTRUCTION | IRRIGATION | ELECTRICAL | MINING

www.srivay.com

Corporate Address: SRIVAY INFRA PROJECTS PRIVATE LIMITED , Flat No: 102, Bhanu Valley
View Apartments,
Plot No:68, Nandagiri Hills,Jublie Hills,
Hyderabad, 500 033

Land Line No: 040 - 23545777
Email: info@srivay.com

FOUNDATION & ABOUT SRIVAY



- **Over 10+ years of Certified ISO 9001:2015 Quality Management & Experience Company in Indian infrastructure**
- **Quality Oriented DNA with onetime Project delivery schedule.**
- **Diverse Areas of Expertise and Services - Civil Construction, Irrigation, Electrical & Mining.**
- **Vigorous Pipeline of Projects in different verticals with on Hand workorders of more than 100+ Crores.**
- **Technically strong team with certified experience of more than 30+ years.**
- **Strong Ethical values team with highest safety Precautions.**

SKILLS AND MANPOWER RESOURCE

PROJECT
MANAGEMENT

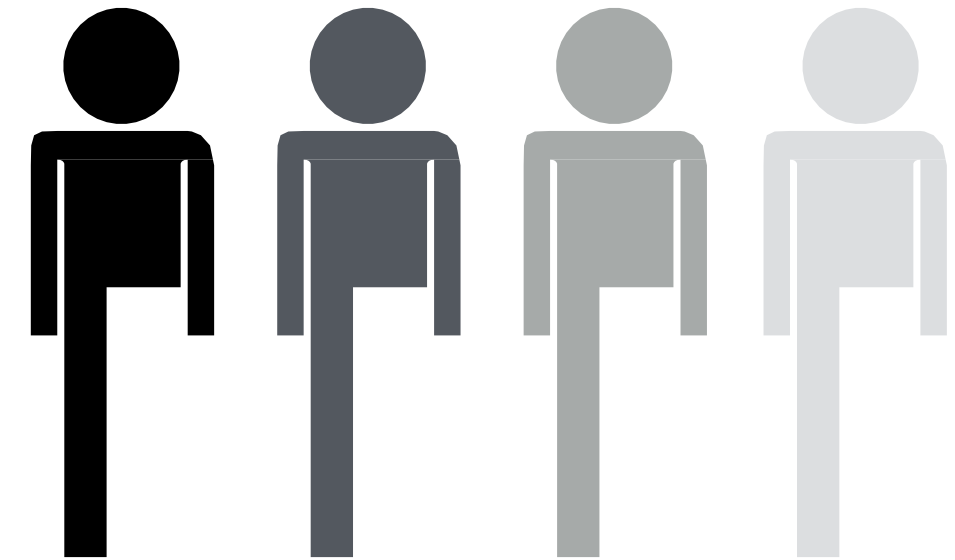
TOWN & INFRA PLANNING

DESIGN & BUILD CONTRACTING

EPC & TURN KEY PROJECTS

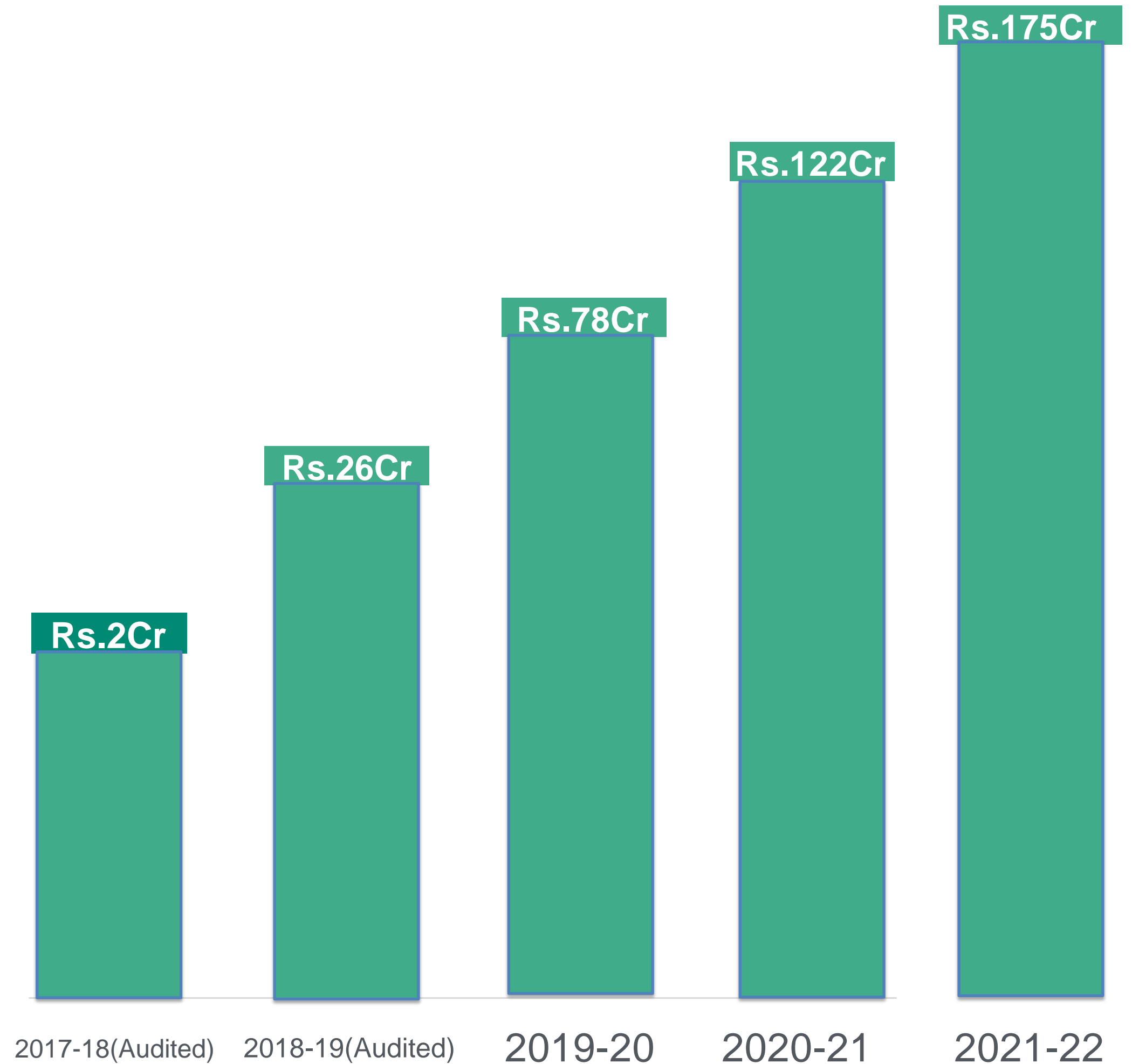
MINING & REAL ESTATE

TECHNICAL/ADMINISTRATIVE PERSONNEL



1	Engineering	22
2	Accounting	14
3	Sales and Marketing	2
4	HR & Admin	11
5	Supervisors	45
6	Welders	10
7	Foremans	40
8	Drivers & Operators	212
9	Electricians	6
10	Construction - Maintenance team	12

TURNOVER PROJECTIONS OF SIPPL



KEY CLIENTS OF SIPPL

- Nagarjuna Construction Company (NCC LIMITED)
- Shapoorji Pallonji Engineering And Construction (SPECL)
- SBC India Limited.
- KMV Group.
- Green city Estates Limited.
- Archana Mines Private Limited.
- Uniton Infra Projects Hyderabad.
- Niraj Cement Structural Limited.
- Naolin Infratech Private Limited
- Ambe Constructions Private Limited.
- KVR Constructions- Dhavanagiri.
- RKI Builders Private limited.
- Amoda Group of Companies
- Benita Industries Limited.



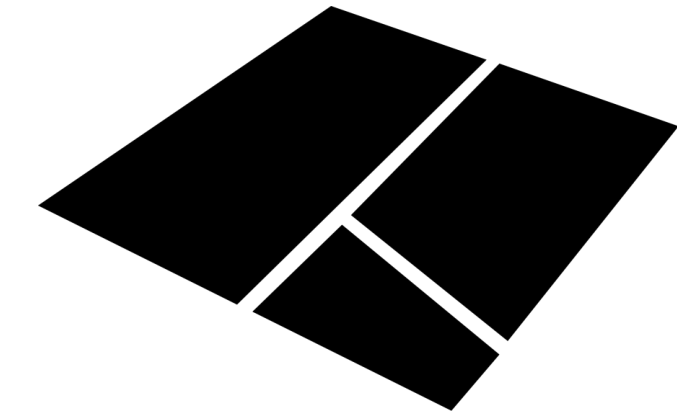
LIST OF PLANT AND MACHINERY AVAILABLE

Sl. No.	Machinery	Nos.	Make	Model No.	Capacity	Year	Units
1	Excavators	18	Tata Hitachi	Ex 200 LC	0.9 Cum	2017	8
			Tata Hitachi Zaxis	Ex 370	2.1 Cum	2018	3
			JCB	380 LC Extra	1.7 Cum	2018	5
			Volvo	380	2.2 Cum	2018	2
2	Backhoe Loader	3	JCB	3DX Super HDT	--	2013	1
			CASE	851 4WD	--	2014	1
			Escorts	DIGMAX-2		2016	1
3	Tippers	47	Ashok Leyland	Taurus	15 Cum	2017	10
						2018	11
						2019	16
			TATA	Tippers	Tippers	2016	10
4	Trailer	1	TATA	LPS4923TC	5883 Cft	2008	1
5	Bulldozers	7	BEML Limited	BEML	D-80	old	2
					D-65	2012/2013	3
					D-65-1	2016	2
6	Batching Plant	7	Nilkanth	NE30	30 Cum/Hr	2012 & 2016	4
				NE30	30 Cum/Hr	2011	2
7	Concrete Mixer	2	Ajax Concrete Mixer with self loader	----	4 Cum	2009&2015	2
8	Transit Mixers	8	Ashok Leyland & Greaves cotton	----	6 Cum	2011, 2012	8
9	Concrete Pumps	2	Aquarius	703D	100 Mtr	2011	1
			Swing Stetter	----	1800X	2012	1
10	Boom Placer	2	Swing Stetter	----	18m & 36m length	2011&2012	2
11	Concrete Paver	7	Diamond	720		2011, 2012	7
12	Motor Graders	2	CAT	----	120H -12FT Blade	2009	1
			BEML	----	BG605-12 FT Blade	2011	1
13	Vibrator Soil Compactors	10	L&T, BOMACO, ESSCORTS & VOLVO	110 D	----	2009,10,11 & 16	10
14	Tata Lebrari Soil Compactor	1	Tata Lebraro	VM03	----	2012	1
15	Sheep Foot Roller	1	ESSCORTS	PAD FO	----	2016	1
16	Vibratory Plate Compactor	1	Doosan	AKT1000	----	2012	1
17	Tandem Roller	1	CASE	450 DX	----	2014	1
18	Water Tankers	14	Ashok Leyland	----	5000 Ltrs.	2010, 2011, 2012	5
				----	8000 Ltrs.		2
				----	12000 Ltrs.		7
19	Diesel Tankers	3	Ashok Leyland	----	8000 Ltrs.	----	1
			TATA	----	10000 Ltrs.	----	2



COMPLETED PROJECTS

- Construction of 44 Micro Irrigation tanks including survey, drawing and all sort of activities required to do land acquisition, including canals.
- Construction of 900 DU's in Stilt+5 pattern and providing of Infrastructure facilities at Jawahar Nagar Phase-1, Sy. No.775, 776 & 784, Keesara (M) in Medchal Constituency in GHMC.
- Construction of Ash Pond in the District of Pratapgarh of Rajasthan including Drawing,Design and all other activities required.
- Construction of CC Roads within Nellore Municipal Corporation Limits under CIIP.
- Supply of the Wet mix Macadam, Granular sub base, Stone Dust, 20mm Aggrigate, 40mm Aggrigate, and all the required material supply for the Road work to UNITON INFRA PROJECTS.
- Nalgonda Water Grid Project, All activities required for testing and Commissioning of the pipeline .
- Construction of the road between Hubli bypass at Km 128+850(Design Ch.128+850) to Hosepet (Hitnal NH-13 Junction)at Km267+000(Design ch.272+571) Four Laning of NH-63 in the State of Karnataka on EPC Mode,



Over 15 Lakh+ Cum of
Embankment/Earthwork
Completed.



Three Lakh Sq feet
Construction completed.

Works-On-Hand

- Excavation of the Over Burden removal & Removal of different Grades of Iron Ore in the Mines of Chabali Village Kadapa District In Andhra Pradesh State

Work Order issued Date:12/06/2019

Work order Value:136Cr.

- Execution balance civil Engineering works of PSC-Via Duct from Noapara to end of existing RCC Ramp of Airport Circular railway track,(Approx Ch no.3.86Km from Noapara) Including working in Noapra Yard in connection with Extension of Metro Railway from Noapara to NSCB Airport.

Work Order issued date:14/05/2019.

Work order value:95.85Cr.

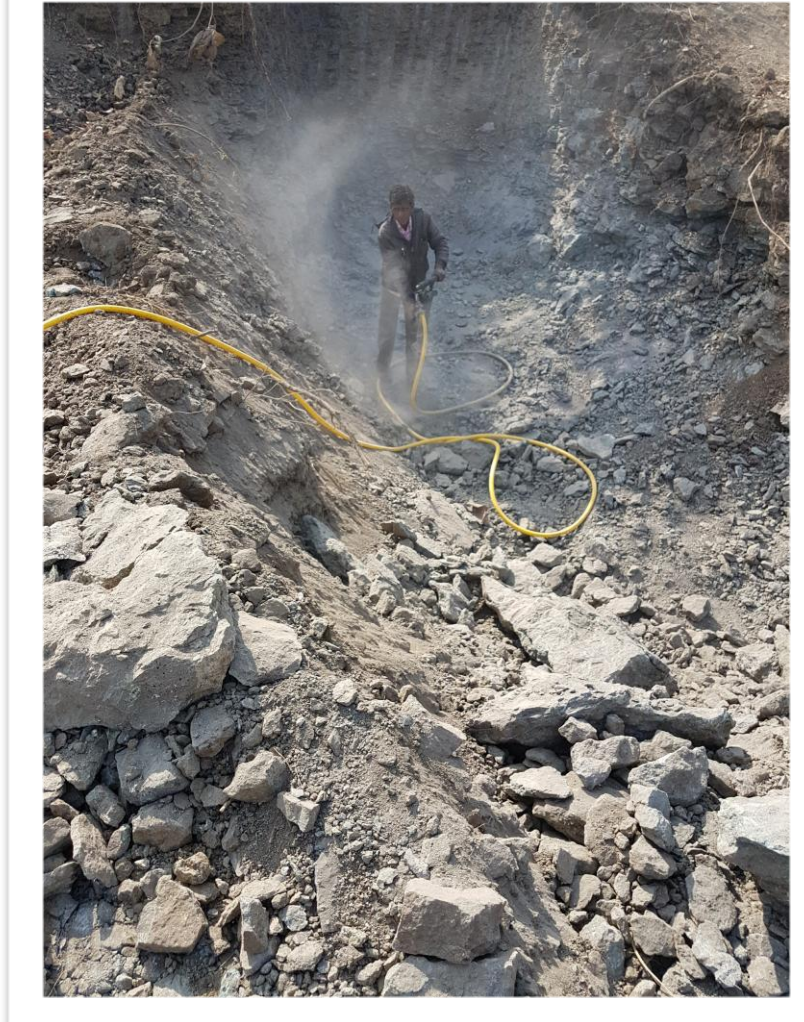
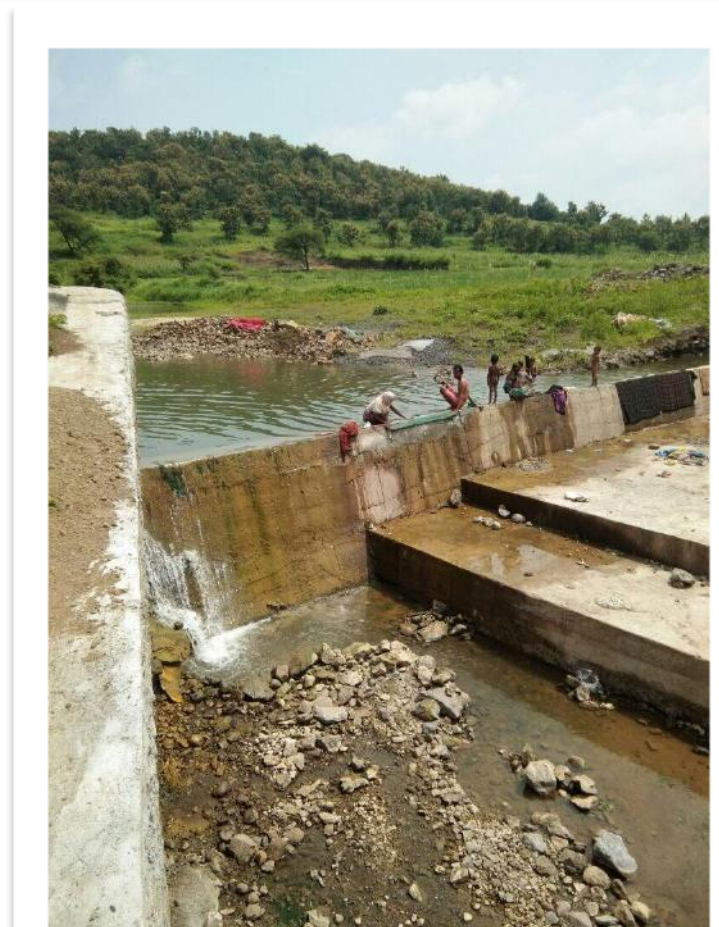
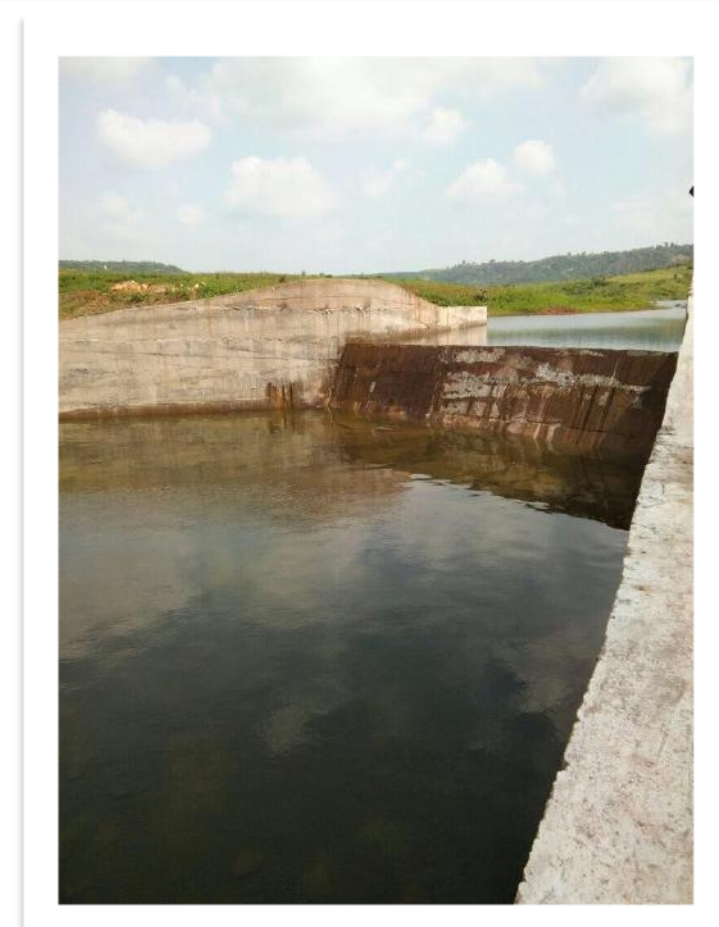
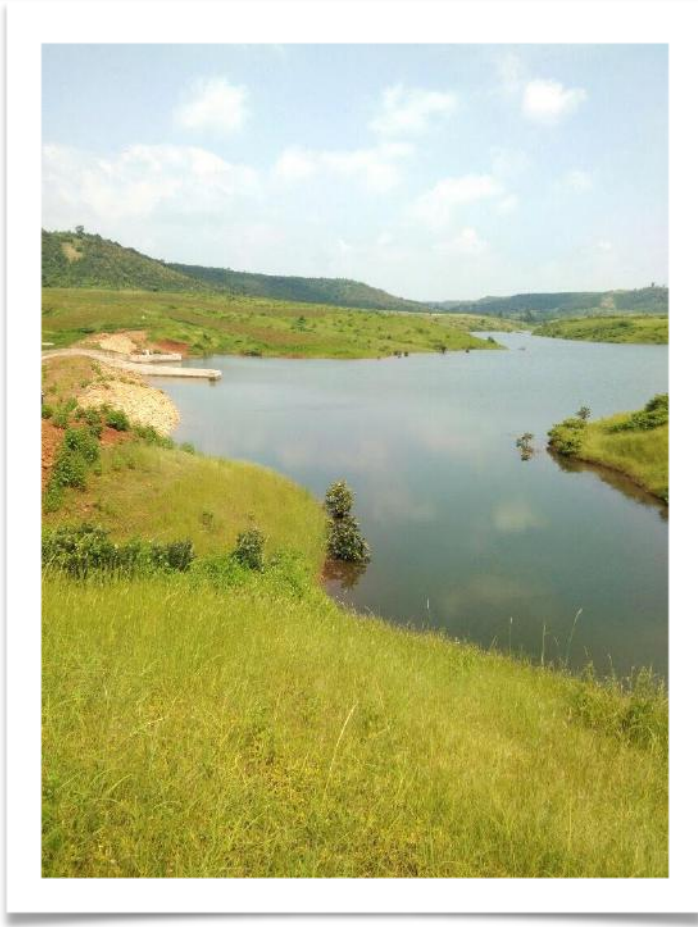
- Construction of Villas In Mokila Village, Shankarpally District, in the State Telangana.

Work order Date:12/09/2019.

Work order value:22Cr



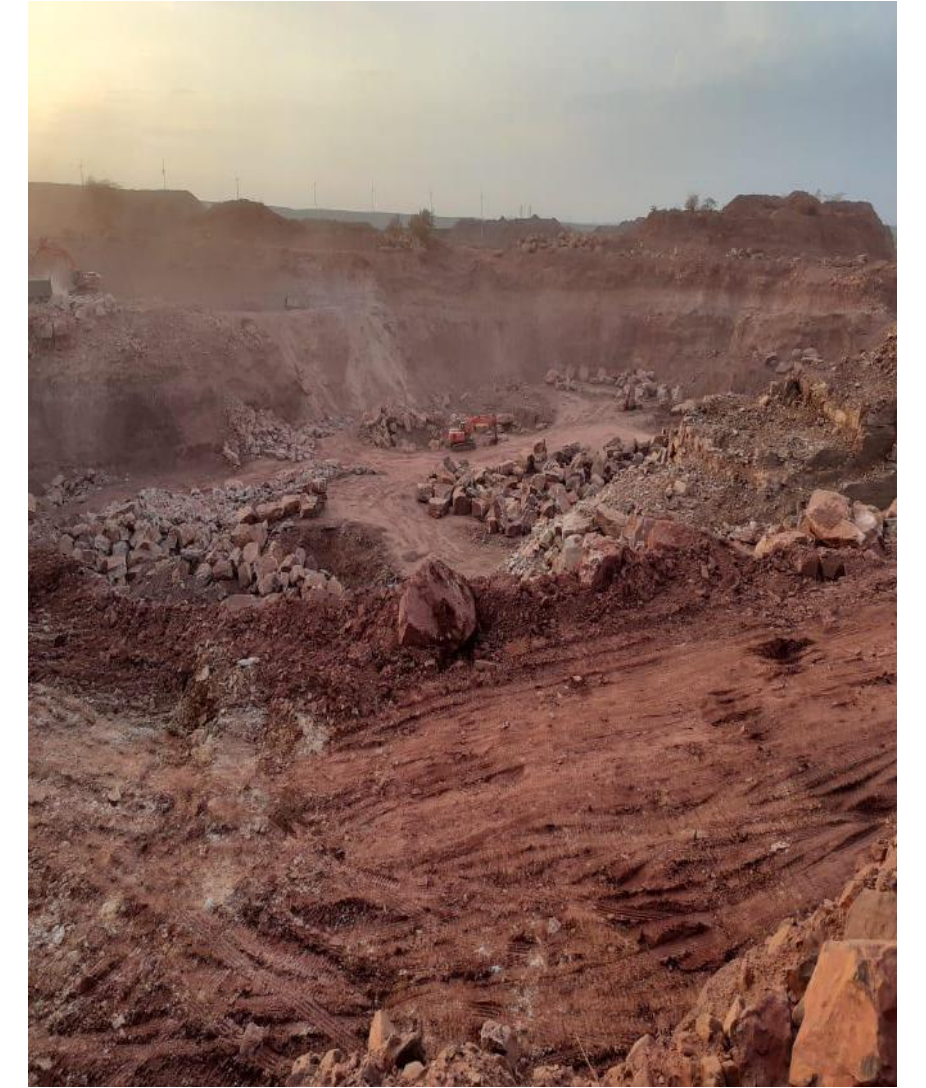
Completed Project: Construction of 44 Micro Irrigation tanks including survey, drawing and all sort of activities required to do land acquisition, including canals



Construction of CC Roads within Nellore Municipal Corporation Limits under CIIP.



Over Burden removal in Chabali Mines Kadapa District, in the state of A.P.



Nopara-Kolkatta Metro Station woking in progress



THANK YOU

SRIVAY INFRA PROJECTS PRIVATE LIMITED
HYDERABAD

